

α -tubulin Mouse Monoclonal Antibody(8F11)

Catalog PMK561M PMK561S

Tel :400-0698-668
E-mail: bioprimacy@gmail.com

Quantity 50 μ L 100 μ L

Web:www.biopmk.com

For research use only.

Applications	Species Cross-Reactivity	Molecular Weight	Isotype
WB, IHC, IF, IP	H, R, M,	52KD	IgG1

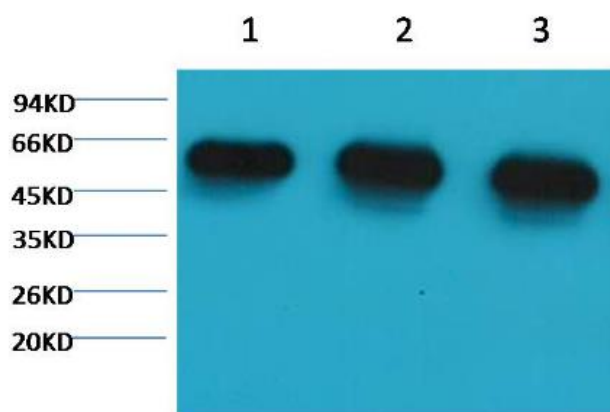
Storage Buffer & Condition: PBS, pH 7.4, containing 0.02% sodium azide as Preservative and 50% Glycerol.
Store at -20°C. Do not aliquot the antibody.

Recommended dilutions: WB: 1:5,000 IHC: 1:200 IF: 1:100-1: 200 IP: 1:200-1:500

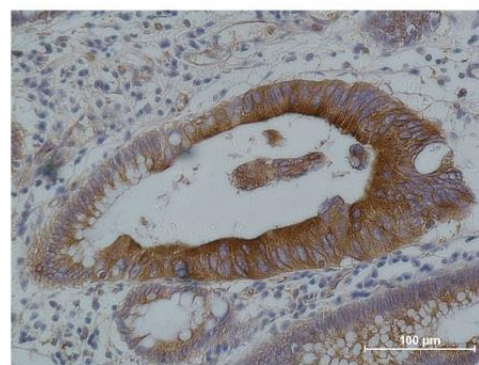
Optimal dilutions should be determined by the end user.

Specificity: The α -tubulin antibody can detects endogenous α -tubulin protein.

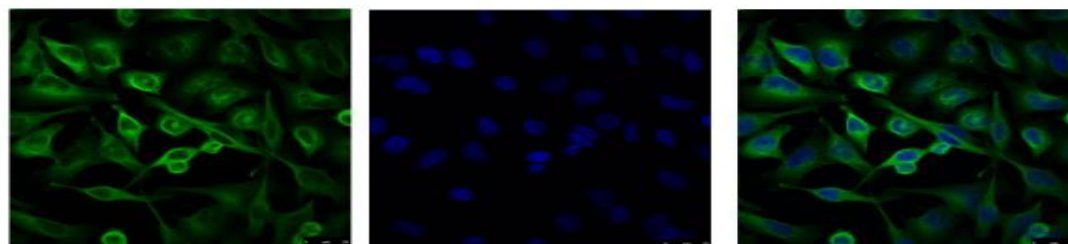
Background: Tubulin is one of several members of a small family of globular proteins. The tubulin superfamily includes five distinct families, the alpha-, beta-, gamma-, delta-, and epsilon-tubulins. The most common members of the tubulin family are α -tubulin and β -tubulin, the proteins that make up microtubules. Each has a molecular weight of approximately 55 KD. Microtubules are assembled from dimers of α - and β -tubulin.



Western blot analysis of (1) , Hela (2) , Rat Brain Tissue, (3) , Mouse Brain Tissue with PMK561 diluted at 1:5000.



Immunohistochemical analysis of paraffin-embedded human Colon carcinoma using PMK561 diluted at 1:500.



IF analysis of Hela with PMK561 and DAPI (Right) diluted at 1:100.

Applications: WB-Western blot IHC-Immunohistochemistry IF-Immunofluorescence IP-Immunoprecipitation ChIP-Chromatin Immunoprecipitation
H-Human R-Rat M-Mouse Mk-Monkey Dg-Dog Ch-Chicken Hm-Hamster Rb-Rabbit Sh-Sheep Pg-Pig