



## $\alpha$ -Smooth Muscle Actin Mouse mAb

Catalog	PMK069M	PMK069S	Tel : 400-457-3801
Quantity	50 $\mu$ L	100 $\mu$ L	E-mail: postmaster@biopmk.com
			Web: www.biopmk.com

For research use only.

Applications	Species Cross-Reactivity	Molecular Weight	Isotype
WB, IHC	H, R, M	42KD	IgG1

**Storage Buffer & Condition:** 1mg/ml in PBS, pH 7.4, containing 0.02% sodium azide and 50% Glycerol.  
Store at -20°C. Do not aliquot the antibody.

**Recommended dilutions:** WB: 1:5000-1:10000 IHC: 1:1000-2000

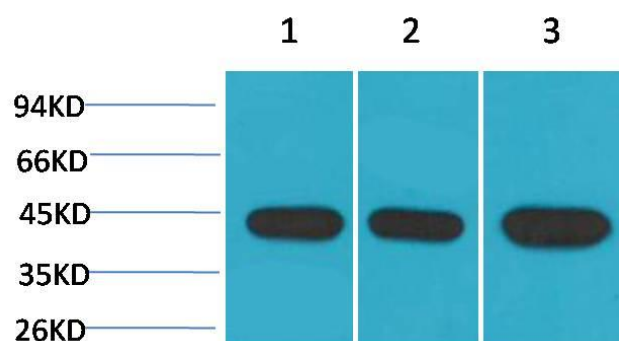
Optimal dilutions should be determined by the end user.

**Specificity:** The  $\alpha$ -Smooth Muscle Actin Mouse Monoclonal antibody can detect endogenous  $\alpha$ -Smooth Muscle Actin proteins.

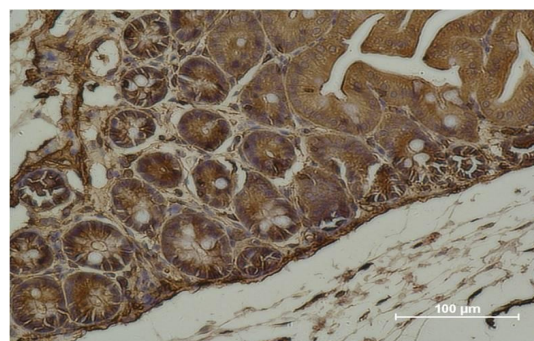
**Alternative Names:** AAT6 antibody, ACTA2 antibody, alpha actin 2 antibody, GIG46 antibody, ACTSA antibody, ACTVS antibody

**Background:** Actin is a globular multi-functional protein that forms microfilaments. ACTA2 codes for an  $\alpha$ -actin located in the smooth muscle, and also in vascular smooth muscle.

**Source:** A Mouse Monoclonal antibody is prepared by immunizing synthetic peptide coupled to KLH.



Western blot analysis of 1) Hela, 2) 3T3, 3) Rat Brain with  $\alpha$ -Smooth Muscle Actin Mouse mAb PMK069 diluted at 1:10,000.



Immunohistochemical analysis of paraffin-embedded Mouse Cecal Tissue using  $\alpha$ -Smooth Muscle Actin (PMK069) Mouse mAb diluted at 1:500.

<b>Application:</b>	WB-Western blot		IHC-Immunohistochemistry			IF-Immunofluorescence		IP-Immunoprecipitation			ChIP-Chormatin Immunoprecipitation	
<b>Reactivity:</b>	H-Human	R-Rat	M-Mouse	Mk-Monkey	Dg-Dog	Ch-Chicken		Hm-Hamster	Rb-Rabbit	Sh-Sheep	Pg-Pig	